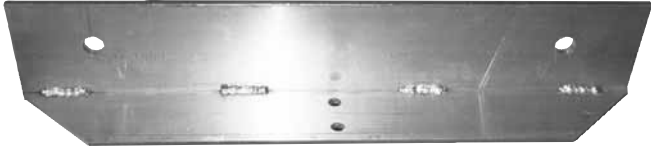


Vertical Form Stiffener

All aluminum construction. 7' standard. Various heights available.

Model No.	Weight	Price
1064B	6 lbs.	\$72.50



B.E.P. Headless Pin

Patent applied for.

Used on 4"x4" ISC corners and anywhere there is no access for normal pin travel. Used with standard wedge. Self catching.

Model No.	Weight	Price
1019	1 lb.	\$10.50 (no wedge)

Setting Spreader

Plates have nail hole to attach to footing or slab. Use 1-2 plates per panel when setting B.E.P. BIG PANELS. Bent ends prevent water from seeping under plate. Indicate by model number, size of wall, and nominal or full width.

Model No.	Description	Weight	Price	Model No.	Description	Weight	Price
1025	6" nominal	.75 lbs.	\$1.20	1032	12" full	1.35 lbs.	\$1.80
1026	6" full	.75 lbs.	\$1.20	1033	14" nominal	1.50 lbs.	\$2.00
1027	8" nominal	1.00 lb.	\$1.40	1034	14" full	1.50 lbs.	\$2.00
1028	8" full	1.00 lb.	\$1.40	1095	16" nominal	?	\$2.40
1029	10" nominal	1.25 lbs.	\$1.60	1096	16" full	?	\$2.40
1030	10" full	1.25 lbs.	\$1.60	1097	18" nominal	?	\$2.80
1031	12" nominal	1.35 lbs.	\$1.80	1098	18" full	?	\$2.80



Fit-up Bolt with Nut

Fit-up bolt with nut to use in place of standard pin and wedge to bolt panels together.

Model No.	Description	Weight	Price
1075	5/8" x 2 1/2"	?	?



Pipe Spacer Remover Tool

Available in all common PVC pipe sizes.

Call for pricing.



Removable Tapered Sleeve

Available from 2"-14" long.

Model No.	Description	Weight	Price
Information to come			



Form Basket

Form baskets can be customized to suit your needs.

Call for pricing.

BIG PANEL

Accessories Price List



**325 Industrial Way
Fayetteville, GA 30215**

**866-BEP-FORM
(866-237-3676)**

**PH: 770.461.1624
FX: 770.461.2387**

**info@bepformingsystems.com
www.bepformingsystems.com**

Screw-in Bushing

Model No.	Description	Price
1073	Screw-in Bushing	\$1.50

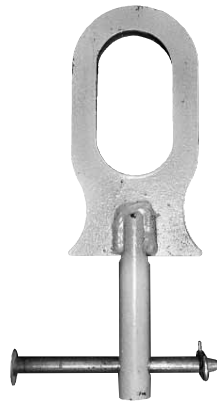
Elevated Dry Tie

Model No.	Description	Price
1084	8"-10"-12" elevated dry tie	\$12.50
1094	14"-16"-18" elevated dry tie	\$14.50

Lifting Ring

Patent Pending.
1 1/16" hole with 3/4" bolt hole for attachment. Heavy 1/2" steel lifting plate welded to shaft. Painted safety yellow.

Model No.	Weight	Price
1011	15 lbs.	\$38.00



Lift Pin with Clip

5/8" x 7 1/4" Lift Pin with Clip

Model No.	Weight	Price
1072	5/8" x 7 1/4"	\$5.50

Walk Board Bracket

Mounts through 5/8" hole and snaps over vertical stud on form.

Model No.	Description	Weight	Price
1013	2" x 4"	2 lbs.	\$10.50
1014	2" x 6"	3 lbs.	\$12.50
1015	2" x 8"	4 lbs.	\$14.50
1016	2" x 10"	5 lbs.	\$15.50
1017	2" x 12"	5.5 lbs.	\$16.50
1035*	2" x 18"	8 lbs.	\$24.00

*OSHA compliant - 18" only



Slip-on Handrail Bracket

36" tall. Accepts 2-2"x 4" rail. Attaches on walk board bracket.

Model No.	Weight	Price
1018	10 lbs.	\$25.00



Adjustable Wall Alignment Brace with Turnbuckle

With Turnbuckle. Units have round end plates with 1 1/16" hole to attach or bolt to form. Also fits all other aluminum form rails. Shoe plate accommodates either metal stake or has nail holes for securing.

Model No.	Description	Weight	Price
1021	10' long	18 lbs.	\$75.00
1022	5' long	12 lbs.	\$65.00
1023	15' long	22 lbs.	\$95.00
1024	20' long	28 lbs.	\$115.00



Coil Shaft

Patent applied for.
36" x 7/8". uses Model # 1005 Wing Nut.

Model No.	Weight	Price
?	?	?

